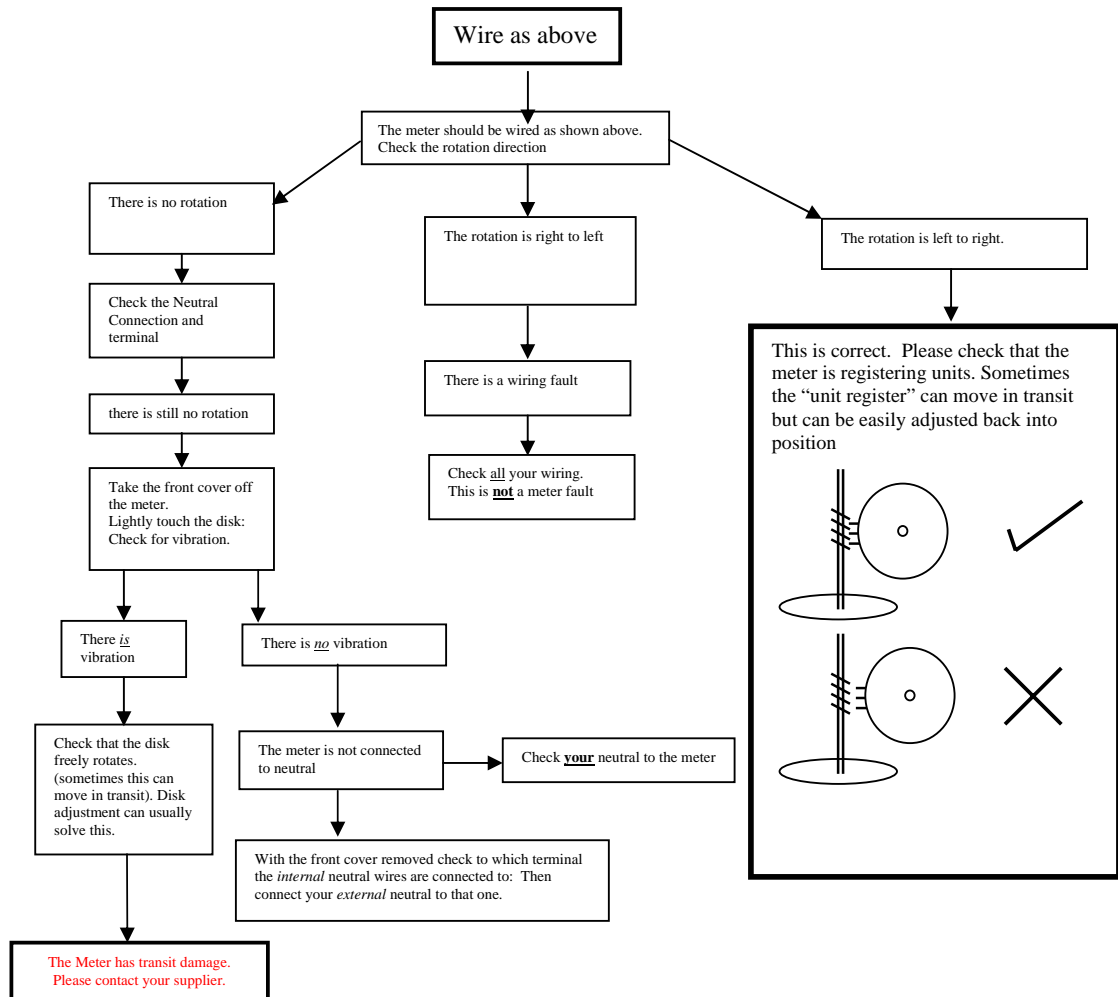
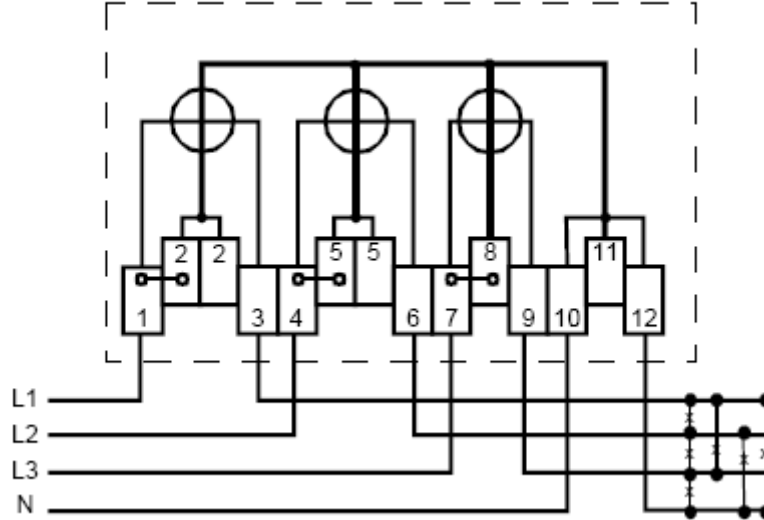


# Stephen P. Wales Ltd

The Old Brewery Works, Lr Ellacombe Church Rd,  
 Torquay. UK. TQ1 1JH  
 Tel: 01803 295430 Fax: 01803 212819  
 email: sales@stephenwales.co.uk

## WIRING GUIDE FOR THREE-PHASE. 4-WIRE. DIRECT WIRED METER





# Stephen P. Wales Ltd

The Old Brewery Works, Lr Ellacombe Church Rd,  
 Torquay. UK. TQ1 1JH  
 Tel: 01803 295430 Fax: 01803 212819  
 email: sales@stephenwales.co.uk

Technical Data: GEC E43B Three Phase 4 wire meter		
	Whole Current	CT Operated
<b>Accuracy</b>	class 2 BS 5685	class 2 BS 5685
<b>Revs/kWh</b>	30	ct dependant
<b>Voltage</b>	230/415v	230/415v
<b>Amperage</b>	40-100amp	100/5, 200/5, 300/5, 400/5, 600/5, 800/5, 1000/5
<b>Pulse</b>	No pulse	No pulse
<b>Maximum Demand</b>	<a href="#">Available on request</a>	<a href="#">Available on request</a>
<b>2-Rate Meters</b>	<a href="#">Available on request</a>	<a href="#">Available on request</a>
<b>kVAh, kVArh</b>	<a href="#">Available on request</a>	<a href="#">Available on request</a>
<b>Rated Voltages</b>	220v (180v-300v)	220v (180v-300v)
<b>Voltage Coil losses</b>		
<b>Power loss</b>	1.0W	1.0W
<b>Burden</b>	5.5VA	5.5VA
<b>Current Coil losses at basic current</b>		
<b>Power loss</b>	0.7W @ 40-100amp	0.3W @ 1-1.2amp
	1.3W @ 80-160amp	0.4W @ 5-6amp
<b>Burden</b>	0.8VA @ 40-100amp	0.6VA @ 1-1.2amp
	1.4VA @ 80-160amp	0.7VA @ 5.6amp
<b>Nett weights</b>	4.1kg	4.1kg
<b>Dimensions</b>	170 x 201 x 167 (WxHxD)	170 x 201 x 167 (WxHxD)