



Stephen P. Wales Ltd

The Old Brewery Works, Lr Ellacombe Church Rd,
Torquay. UK. TQ1 1JH
Tel: 01803 295430 Fax: 01803 212819
email: sales@stephenpwales.co.uk

TP100 (REP) 100amp reconditioned 3-phase Meter

Features of the Reporter Range

- * IEC 1107 FLAG port .
- * Expansion data port .
- * Pulsed output.
- * Reverse energy detection/export energy register
- * Fraud protection.
- * Class 1 and 2 accuracy



3-phase (REP3) Features

- Direct connection 20-120A
- Class 1 and 2 accuracy to IEC 1036,1268
- Optional Maximum Demand recording
- Active and Reactive energy measurement
- * 8 time of use registers

Data Collection

The FLAG and inductive data ports give alternative platforms for data collection. The inductive data output provides register and status information from within the meter to support any interface module including R.L.C. (Mainstalk), Low Power Radio, Telephone, Prepayment etc.

Technical Specifications

Power Supply Rated voltage 230/400V - other voltages available on request

Phase configuration 3Ph 4w

2Ph + N (3Ph 4w)

1Ph 3w

2x1Ph 2w

1Ph 2w

Current Range 20-120A standard

Accuracy Class 1 or 2 IEC 1036, 1268

Dimensions *Height* 172mm *Width* 168mm

Depth 57mm

Tails 35sq.mm

Temperature Range - All Meters

Operating Range: -10°C to 45°C

Limit range of operation: -20°C to 55°C

Storage range*: -25°C to 70°C

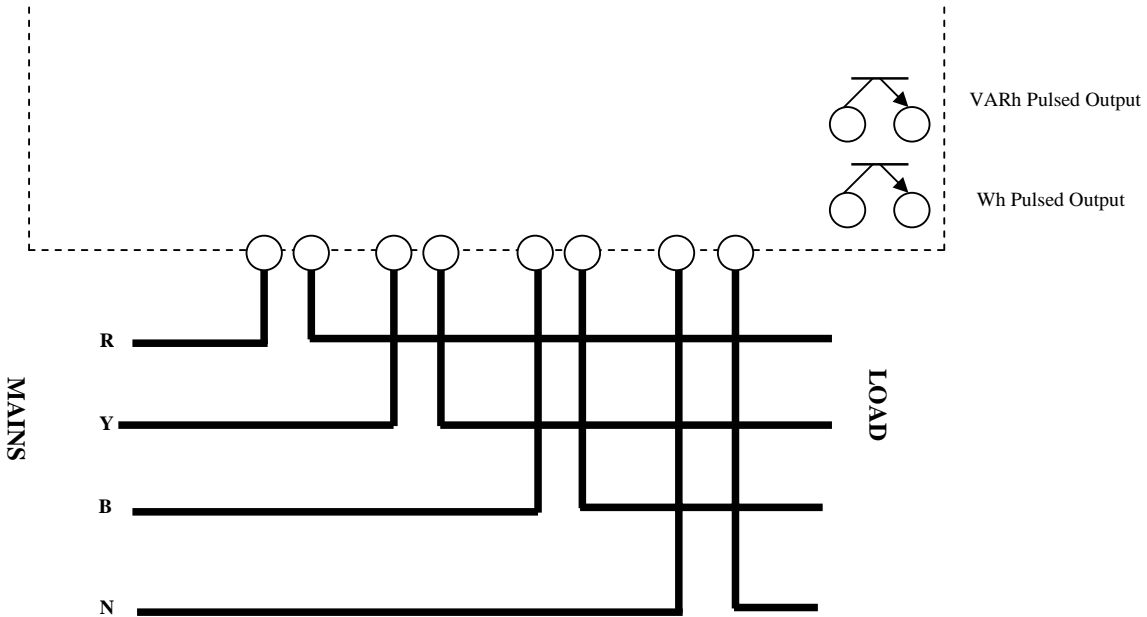


Stephen P. Wales Ltd

The Old Brewery Works, Lr Ellacombe Church Rd,
Torquay. UK. TQ1 1JH
Tel: 01803 295430 Fax: 01803 212819
email: sales@stephenpwailes.co.uk

WIRING GUIDE FOR REP3

Three phase & neutral



REP3 METER

